

it's time to switch off
& relax in luxury

slow

g l a m p i n g



a big

hello


from us



Nan, Margaret

Dad and uncle,
Michael and David






We're Jon & Jess

owners of Slow glamping

In 2022, Jess left her corporate job. Feeling burned out, a slower pace was needed! It was time to take a leap of faith and make Slow glamping a reality.

Slow glamping is all about escaping the everyday hustle, relaxing in nature and taking time to reconnect with yourself. We hope you feel that difference during your stay.



Tillislow Farm has been run by Jon's family for a century. There's plenty to discover for fellow nature lovers. If you want to venture further than the campsite, you can head down to the farm yard - please bear in mind it's a working farm so keep an eye out for tractors, machinery and livestock. If you continue further on, you'll end up in Tillislow wood. The ancient woodland is teeming with wildlife - if you're lucky you might spot a deer. Follow the path (formerly the railway track) which runs alongside the river and you'll come across the quarry, a little further is the old railway bridge. This is our favourite place on the farm to walk but watchout it can be very muddy and don't forget to bring a drink. For the very brave, enjoy a refreshing dip in the River Carey.

We hope you have fantastic stay.

A little bit
about the farm



Jon & Jess





less screen time

more
you 



Tillislow Farm

Be safe, follow The
Countryside Code

- If you find a gate closed, close it when you pass through
- If you must climb a gate, always do this at the hinged end
- Keep to paths or walk around the edge of a field
- Avoid fields with livestock in
- Don't interfere with livestock, machinery and crops
- Take your litter home (campsite bin)
- Wear suitable clothing and footwear
- Be careful and make sure to extinguish all used matches and cigarettes.



KEY:

-  **Slow glamping site** 1
-  **Tillislow Barton Barn (Parking)** 2
-  **Tillislow Farm yard** 3
-  **Tillislow wood walk:**
 - Woodland entrance 4
 - Quarry 5
 - Old railway bridge 6
-  **Virginstow view walk** 7

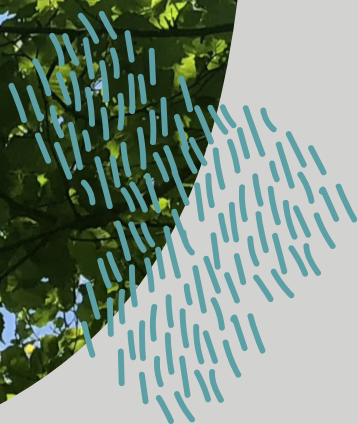
enjoy a
slower
pace





If you don't sleep
you can't dream

don't
forget
to look
up





A list of local places
to eat and adventure

- > **Roadford Lake (3.5 miles)**
Explore the South West's biggest reservoir.
Cafe, watersports, forest, nature reserve, foot and cycle paths.
- > **Lifton Strawberry Fields (5.6 miles)**
Enjoy local and scrumptious produce.
Farm shop, cafe, children's play area.
- > **Dingles Fairground Museum (7.6 miles)**
Take a trip back in time with exhibits and artefacts.
Have a go on the dodgems, gallopers, ghost train etc.
- > **St Giles (3.1 miles)**
The local village.
Post office and shop, The pint & post (pub and restaurant)
- > **Lifton (5.5 miles)**
The local village.
Pubs, restaurants, post office and shop, petrol station.
- > **Launceston (7.2 miles)**
The local town.
Supermarkets, shops, petrol stations, castle, minor injuries unit.
- > **Bude (19.3 miles)**
The local beach town.
Beaches, canal, supermarkets, shops, restaurants.
- > **Village Inn, Ashwater (2.4 miles)**
A proper Devonshire local countryside pub and restaurant.
- > **The Arundell, Lifton (5.4 miles)**
A fancy restaurant, perfect for a special occasion.

thank
you



We hope you have
an amazing time

slow
g l a m p i n g